



Easy-to-read Metro user guide

How can you find your way around the stations?

At Metro, you'll find many information and orientation signs inside the stations, at the metro entrances and at the different access points.

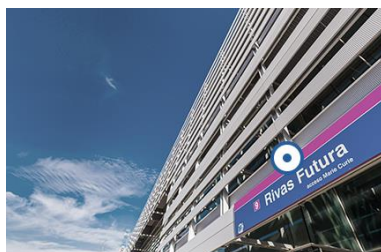
Signs help you find out where you are and where you can go.

Metro line indications

- Metro consists of a network of numbered lines.
- Each line has several stations.
- Lines 1 to 12 and R are Metro lines.
- The R line is named after the word Ramal.
- The Ramal line connects Ópera and Príncipe Pío stations.
- ML1, ML2 and ML3 are Metro Ligero lines.
- The same station may be on a single line or on several lines.



The colours of the lines can be seen in a strip at the entrance or throughout the station.



At the entrance.



Inside the station.

There are stations where several lines intersect. These stations correspond to several lines.

At these stations, there is a strip with the colour of their line below the station name.

For example, at Nuevos Ministerios station, there is a grey stripe on the Line 6 platform, a pink stripe on the Line 8 platform and a blue stripe on the Line 10 platform.



Line 6.



Line 8.



Line 10.

The colours of the walls are not related to the Metro line.

For example, a station with yellow walls may be Line 3 or another line of a different colour.

Wall colours can be different depending on the station.

Direction signs

Inside the stations, there are several types of blue signs to guide you in a direction:

Towards the line platforms:



No station list.



With station list.



You can find correspondence signs with other lines when several lines cross at the same station.

Towards the exit:

This sign is green.

It may indicate one or more exit streets and the odd or even numbers of the pavements:



Image with direction signs.

On the platform:

You have signs showing you how to get to the platform of another line, when several lines cross at the station.



Lift signs

There are lifts in many Metro stations.

You can find the lift as follows:

- On the street, they are near the entrance with stairs.
- Inside the station entrance pavilion, after the glass doors at the entrance.
- In the lobby.
- On the platforms.



Lift inside a pavilion

The lifts have signs with:

- The Metro logo.
- The name of the station.
- The colours of the Metro lines that connect with that station.



A green sign with the word "Lift" indicates a lift to an exit.

On the door of the lift, you'll find information about where the lift takes you..

The lift can take you to the exit, a platform or an intermediate floor.

See which one is the one you need!



Remember

No entering lifts that are out of order.

i INFORMACIÓN / Information

ASCENSOR FUERA DE SERVICIO
Lift out of service



Por causas técnicas
For technical reasons

Metrolink



Signs on escalators

There are many escalators in Metro stations.

Escalators can take you from the street to the lobby and from the lobby to the platforms.

The deepest stations have several flights of escalators.

Escalators can run upwards or downwards.

Downward escalators have a green light at the top.

It's an aid for the visually impaired.



Remember

No using a stationary escalator.

i INFORMACIÓN / Information

ESCALERA MECÁNICA
FUERA DE SERVICIO
Escalator out of service

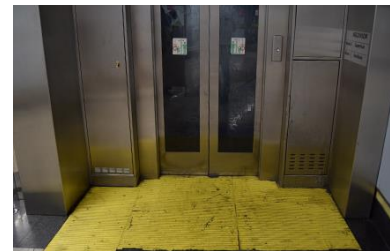
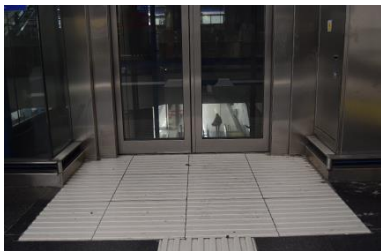


Floor signs

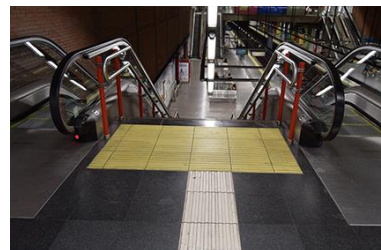
Metro also uses floor signs.

You can find these signs at:

- At lift doors: white, black or yellow.



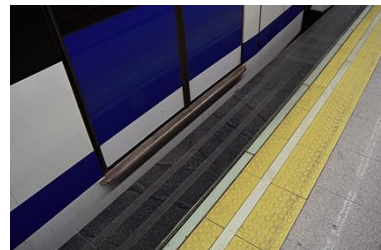
- At the top and bottom of the stairs and escalators. Soon in all stations.



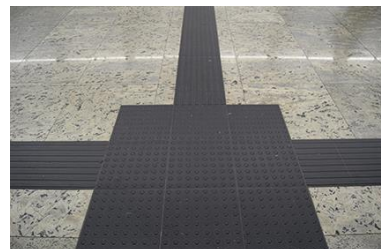
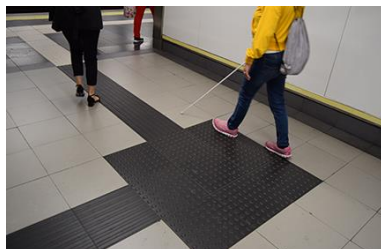
- On the platform, to mark the first and last door of the first carriage of the train in grey.



- At the edge of the platform, to indicate the danger limit regarding the track, it's yellow with dots.



- The podotactile paving is a thickly striped or thickly dotted tile.
- They come in various colours: grey, yellow or orange.
- These tiles help the blind.



- The striped tiles guide you to go from one place to another.
- Dotted tiles indicate a multi-path crossing or platform edge.

- Some of the striped tiles also indicate the location of ticket vending machines.



Accessibility sign

The symbol is called the International Symbol of Access. It is also known as ISA.

This symbol is for all the disabled, not just wheelchair users. You can find this sign on Metro platforms.

This sign marks the safety area for entering the train.



You can also find ischiatic supports on the platforms to rest on.

